



Utah's Homeless Approach

Orange County Forum
President/CEO

September 17-18, 2015

Lloyd S. Pendleton Orange County, California

Pendleton Enterprise

Homeless Homed -- The Daily Show




With Jon Stewart

<http://thedailyshow.cc.com/videos/Intv3q/the-homeless-homed>

Daily Show Clip

- What is your take away from this clip?
- How was the resident (Russell) portrayed?
- How do you view/feel about homeless families and individuals?

- 
- How does your feelings about homeless citizens:
 - Affect what actions you take?
 - How those actions are undertaken?

Utah Chronic Homeless Count



■ Number of Chronically Homeless Persons (2013 & 2014 Not Including Safe Haven, 2005 to 2014 Chronic Count is Annualized, the 2015 Chronic Count was not Annualized)
—●— % Chronic of Total Homeless Persons



Why the Success in Utah?

- **Champions** for homeless citizens
- **Collaboration** among homeless service providers, funders, political leaders in cities, counties, and state
- **Compassion** for providing viable housing opportunities and services for our homeless citizens




Champions



Characteristics of a Champion

- **Energy** – Begins and finishes projects
 - Stamina & staying power
 - Enthusiasm & optimism
 - Sense of humor
- **Bias to Act** – Solve problems not decry them
 - Focus on solutions

- 
- Sense of urgency
 - Opportunity driven

Champions -- Continued

- **Results Oriented** – Outcome, not process matters most. Networking & capacity building are the means, not the end
 - Need for achievement
 - Clear & compelling vision for success
 - Chart & use milestones

Champions -- Continued

- **Personal Responsibility** – Take responsibility for their own their behavior
- **Belief in Common Good** – Look beyond what is good for their families & friends
 - See & feel impacts on others
 - Builds on diversity
 - Activate shared values

Champions -- Continued


- **Inclined to Teams** – Provide the juice, but know they need an engine
 - Form teams from different, not like-minded
 - Share credit as well as information
 - Seek creation, not agreement



Collaboration

State of Utah Vision

Everyone has access to safe, decent, affordable housing with the needed resources and



supports for self-sufficiency
and well being.

“Men build too many
walls and not enough
bridges.”

Sir Isaac Newton

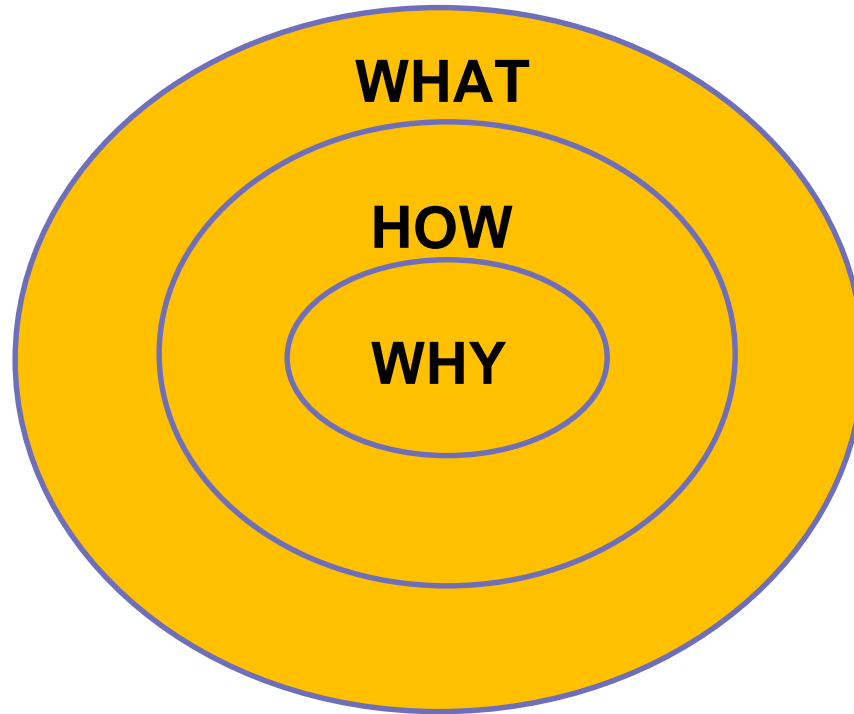
Stakeholders

- **Who** needs to be at the table?
 - Champions,
 - Political leaders,
 - Funders,
 - Housing Authorities,
 - Business leaders,
 - Faith based leaders
 - Homeless service providers
 - others




Compassion

The Golden Circle



Questions to Consider

- **What** needs to be done?

- 
- **How** will it be done? ■ **Why** will it be done?

- King's Dream Speech


- **Vision** – Homeless Citizens achieve maximum integration into society

- Housing a major step

- Keeping housing key


Who Are the Homeless?

- Citizens of our communities

- 
- People suffering and in need of hope
 - Bigger picture – brothers & sisters

How We Serve


- Most desire to “help” others
- Helping, fixing, serving
 - Three different ways of seeing life. When you help, you see life as weak. When you fix, you



see life as broken. When you serve, you see life as whole. Fixing and helping may be the work of the ego and service the work of the SOUL. Rachel Remen, Kitchen Table Wisdom

- Mrs. Henry

I chose the road less
traveled and now I



don't know where the
hell I am.

National Effort



National Effort on Chronic and Veteran Homelessness

- 10% homeless population chronic
- **Chronic Definition** -- Unaccompanied adult with a disabling condition homeless a year or more or four times in three years
- 10-14% homeless population veterans
- End veterans homelessness by 2015
- End chronic homelessness by 2015 (Initial date)

Cost of Homelessness

- Chronic homeless individuals have emergency services costs such as:
 - Emergency rooms visits to hospitals
 - Transportation to hospitals
 - Jail time
- \$48,792 per person (JAMA 4/1/09)
- \$40,449 per person (Culhane NY, NY study)
- \$35,949 per person (San Diego Serial Inebriate study)



Utah – Chronic Homelessness Housing Opportunities End of 2015

- One Salt Lake person's 2010 ER costs were **\$563,000**
- One over 3 years was **\$937,744**

Continuum of Care

- HUD organization, local service providers
- Apply for HUD funding
- California has 39, Utah three
- Plan/coordinate homeless housing & services
- California receives \$307.6, Orange County \$19.5, & Utah \$8.0 million annually
 - California Per Capita \$7.93
 - Orange County \$6.27
 - Utah Per Capita \$2.88



California Overview

2014 Homeless Population

(12.3%)

Category	California	Utah	National
Homeless Population	113,952 (19.7%)	3,081	578,424
Unsheltered	71,437 (62.7%)	313 (10.2%)	177,373 (30.7%)
Chronic Homeless Individuals	28,200 (35.5%) (84.3% Unshelt.)	386 (10.4% Unshelt.)	84,291 (63.0% Unshelt.)
Veterans	12,096 (10.6%)	317 (10.3%)	49,933 (8.6%)
Persons in Families	23,187 (20.4%)	1,342 (43.6%)	216,261 (37.4%)
Annualized % of Pop. (Chronic X 2, Non Chronic X 5)	485,160 (1.3%)	14,454 (0.5%)	2.6 M (0.8%)

Population	38,800,000	2,901,000	316,100,000
Category	Orange Co.	Utah	National
Homeless Population	3,833 (0.7%)	3,081	578,424
Unsheltered	1,678 (43.8%)	313 (10.2%)	177,373 (30.7%)
Chronic Homeless Individuals	798 (0.9%) (83.7% Unshelt.)	386 (10.4% Unshelt.)	84,291 (63.0% Unshelt.)
Veterans	398 (10.3%)	317 (10.3%)	49,933 (8.6%)
Persons in Families	1,272 (33.2%)	1,342 (43.6%)	216,261 (37.4%)

Annualized % of Pop. (Chronic X 2, Non- Chronic X 5)	16,771 (0.5%)	14,454 (0.5%)	2.6 M (0.8%)
Population	3,114,000	2,901,000	316,100,000

2014 Homeless Population



Utah's Approach



State of Utah Vision

Everyone has access to safe, decent, affordable housing with the needed resources and supports for self-sufficiency and well being.

**When your vision is crystal
clear, taking action
happens naturally.**

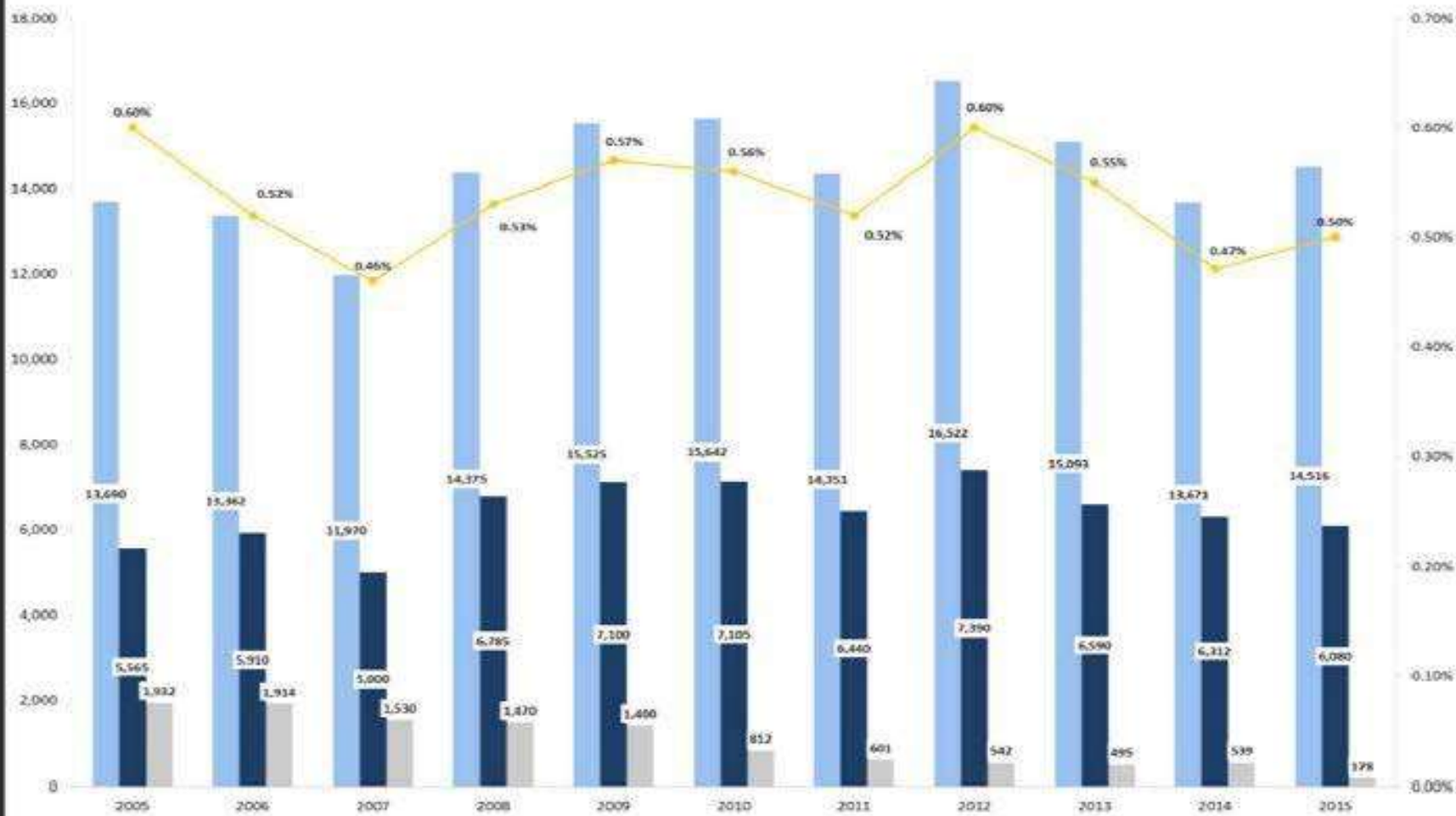
Thomas F. Crum, “The Magic of Conflict”

Utah Chronic Homeless Count



■ Number of Chronically Homeless Persons (2013 & 2014 Not Including Safe Haven, 2005 to 2014 Chronic Count is Annualized, the 2015 Chronic Count was not Annualized)
● % Chronic of Total Homeless Persons

Utah Homeless Point-In-Time Count: 2005-2015



- Annualized Total Count
- Annualized Number of Persons in Families
- Number of Chronically Homeless Persons (2013 & 2014 Not including Safe Haven, 2005 to 2014 Chronic Count is Annualized, the 2015 Chronic Count was not Annualized)
- Total Homeless Persons as % of Total Population

Source: 2015 Annualized Utah Homeless Point-in-Time Count and 2015 Point-in-Time Count

Chronically Homeless Persons

- Each chronically homeless person placed in housing freed up a shelter bed for 10.7 homeless persons at Utah's largest shelter
- As a result, 200 plus shelter beds have been converted to family beds
- 1,970 persons per year in those beds

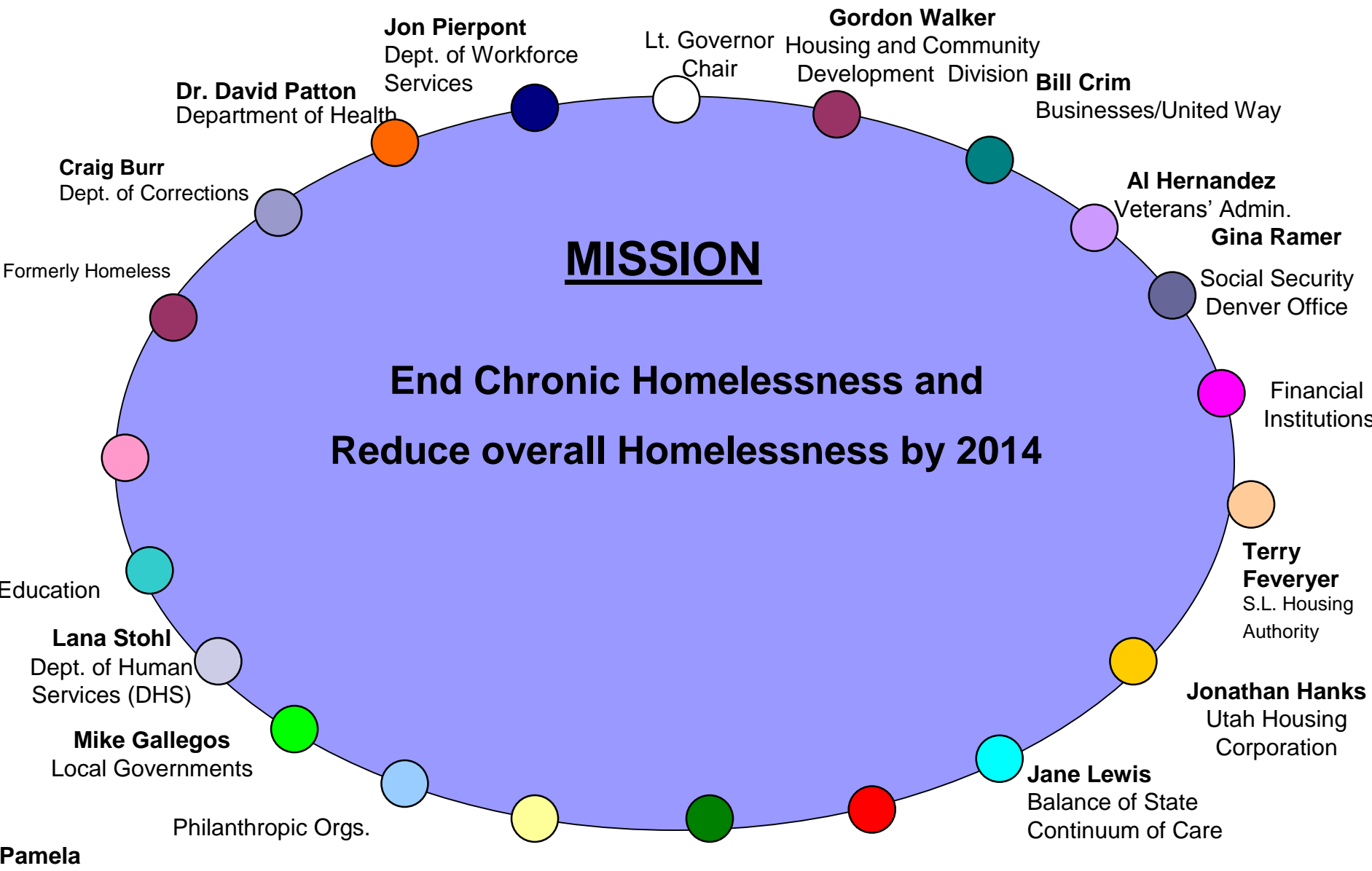
Utah's Homeless Population

<u>Categories</u>	<u>2005 Count</u>	<u>2015 Count</u>
Sheltered	11,275	13 ,556
Unsheltered	<u>2,415</u>	<u>1,091</u>
Total	13,690	14,646
% state pop.	0.55%	0.50%

Chronic	1,932	178 (91%)
---------	-------	--------------

■ Homeless Coordinating Committee

Spencer Cox



MISSION

**End Chronic Homelessness and
Reduce overall Homelessness by 2014**

Jon Pierpont
Dept. of Workforce
Services

Lt. Governor
Chair

Gordon Walker
Housing and Community
Development Division

Bill Crim
Businesses/United Way

Al Hernandez
Veterans' Admin.

Gina Ramer

Social Security
Denver Office

Financial
Institutions

**Terry
Feveryer**
S.L. Housing
Authority

Jonathan Hanks
Utah Housing
Corporation

Jane Lewis
Balance of State
Continuum of Care

Dr. David Patton
Department of Health

Craig Burr
Dept. of Corrections

Formerly Homeless

Education

Lana Stohl
Dept. of Human
Services (DHS)

Mike Gallegos
Local Governments

Philanthropic Orgs.

Pamela



Atkinson At
Large

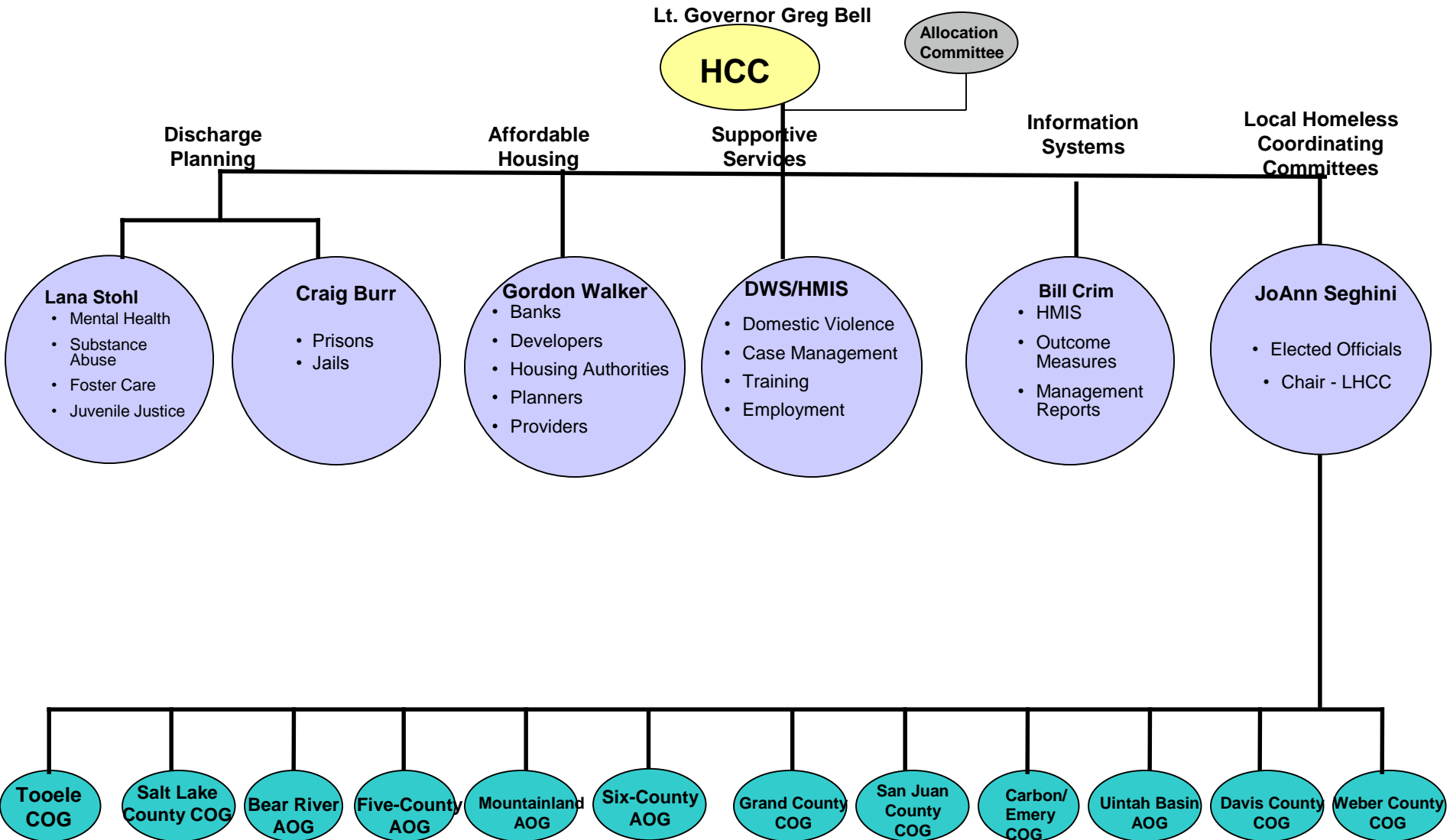
Max Lang
Office of

Ron Humphries
Faith Based Orgs.


Tara Rollins
SLC Cont. of Care

Bill Hulterstrom
Mountainland Cont. of Care

February 2012



■ Homeless Coordinating Committee Organization



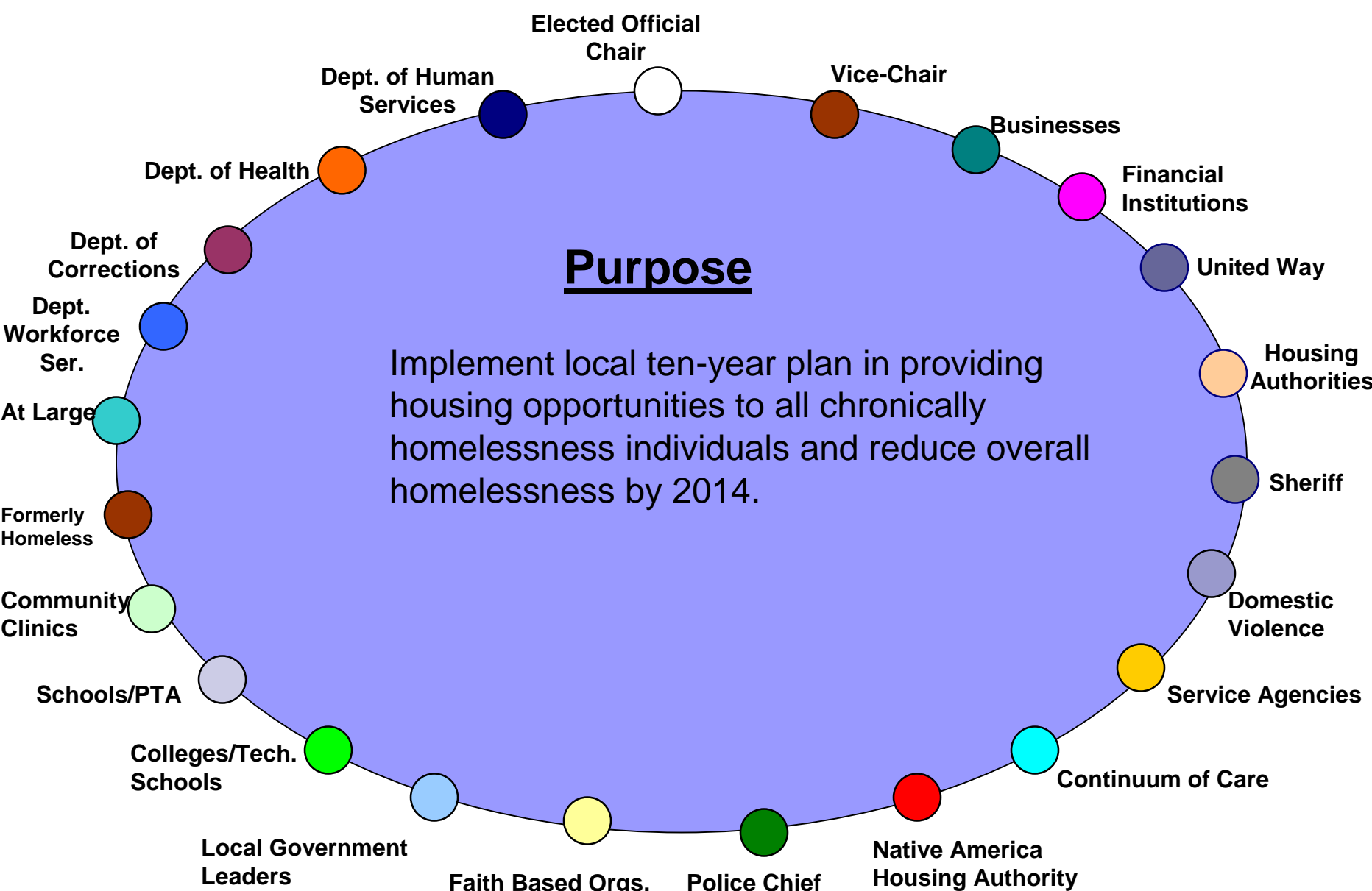
COG – Council of Governments

AOG – Association of Governments

October 2013



AOG/COG Homeless Coordinating Committee (Model)





Local Homeless Implementation Plan



State Committees

- Homeless Coordinating Committee
 - Discharge Planning
 - Affordable Housing
 - Supportive Services
 - Information Systems

Funding

- State (PAHTF, CNH, ESG, OWLF, CIB)
- Private
- Federal
 - Block Grants (CSBG, CDBG, SAPTBG, MHBG)
 - Entitlements (SSI, SSDI, DBA Vets)
 - Mainstream Programs (Food stamps, SCHIP, TANF, Section 8, Home, DVA, Public/Indian Housing)
 - Homeless Targeted Programs (Cont. of Care, Health Care, PATH, Employment, Surplus Property, etc.)

HUD REQUIREMENTS

- Consolidated Housing Plan
- Continuum of Care Annual Strategies

State 10-Year Plan

Local Homeless Coordinating Committee

Political Leader Chair

Local 10-Year Plan

Actions

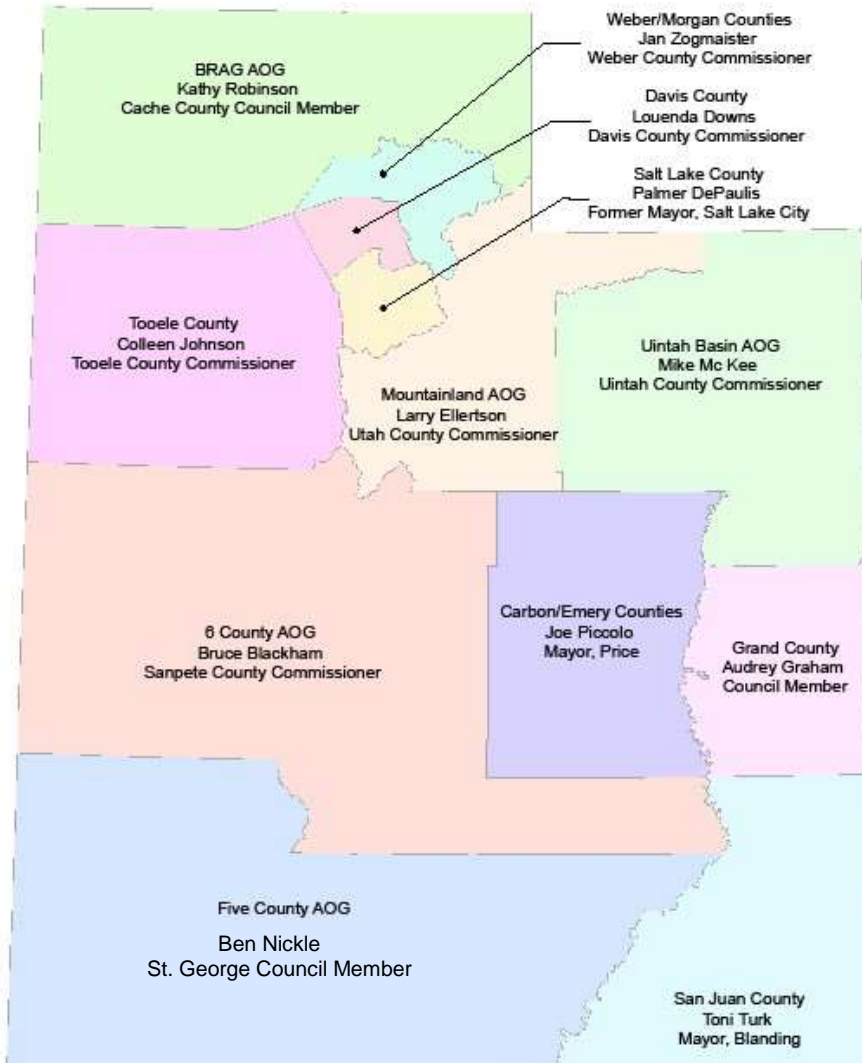
- Housing
- Reduce D V
- Prevention
- Employment
- Income Support
- Discharge Planning
- HMIS/Outcome Measures
- Transportation
- Supportive Service
- Health Care
- Other




*Education (DOE), Homeless Vets – Transitional Housing (DVA), Treatment for the Homeless (SAMHSA), Runaway (AFC/DHHS)




TEN-YEAR HOMELESS PLAN ORGANIZATION LOCAL HOMELESS COORDINATING COMMITTEES





How is
homelessness
ended?



**“No problem can be
solved from the same
consciousness that
created it”**

Albert Einstein



Housing First

Housing First -- Permanent Supportive Housing – Chronic Homeless

- Two core convictions:
 - Once the chaos of homelessness is eliminated from a person's life, clinical and social stabilization occur faster and are more enduring
 - Housing is basic and not a reward for clinical success



Housing First Principles – Cont.

- Embraces a harm reduction approach to addictions rather than mandating abstinence. The provider must also be prepared to support resident commitments to recovery
- Residents have leases and tenant protections under the law
- Can be implemented in either a project-based or scattered site model
- Residents pay 30% or \$50 which is greater



Housing First Principles

- Move people into housing directly from streets and shelters without preconditions of treatment acceptance or compliance
- Provider is obligated to bring robust noncoercive support services to the housing
- Continued tenancy is **not** dependent on participation in services
- Units are targeted to the most vulnerable homeless members of the community



Housing First – Utah Pilot

- We had heard about the Housing First concept developed in New York City
 - Would it work in Utah?
- 2005 pilot of the most difficult (17) to test it while a 100 unit facility was constructed
- We became believers, especially case managers

- Now operate with belief “all can be housed”

Sunrise Metro (100 units) – April 2007

Project Partners

- Utah Division of Housing and Community Development
- Salt Lake City
- Salt Lake County
- Crusade for the Homeless (Private Foundation)
- George S. and Dolores Dore Eccles Foundation
- Church of Jesus Christ of Latter Day Saints
- Utah Housing Corporation



- American Express

Grace Mary Manor (84 units) – April 2008





Freedom Landing

Homeless Veterans (110 Units) -- Jan. 2010



Kelly Benson 55 and Older Homeless - June 2010

(59 Units, 70 Beds)





VALOR HOUSE

in partnership with
Housing Authority of Salt Lake City
&
Department of Veterans Affairs

Bud Bailey Apartments – 134 Units



Homeless Housing

■ PSH Single Site	751
■ Scattered Site	<u>150</u>
□ Total	901
■ Retention Rate	80%
■ On to other stable settings	10%
■ Eviction Rate	6%
■ Died	2%
■ Unknown	2%

Summary

- Champions are key in accomplishing a desired outcome
- Collaboration of stakeholders very important
- Look long and deep at the **why** of what you undertake – Start with the **WHY**

**When your vision is crystal
clear, taking action
happens naturally.**

Thomas F. Crum, “The Magic of Conflict”